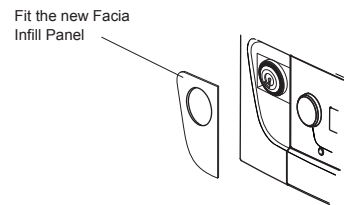
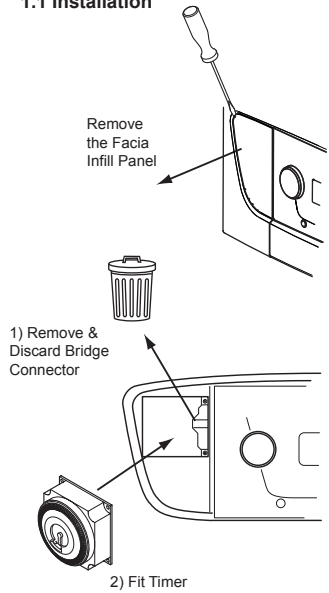


1.0 Fixing & Operating Instructions - Mechanical & Digital Timer

1.1 Installation



1.1.1 General fitting instructions - Mechanical & Digital Timer

WARNING: Isolate the power supply before proceeding.

Note: The IP rating of the boiler with a plug-in accessory fitted is IP20. Ensure siting is appropriate before installing this accessory.

1. Ensure that the electrical supply to the boiler is isolated.
2. Using a suitable flat bladed screwdriver prise the Blanking Plate from the front left-hand side of the facia assembly.
3. Remove the two screws securing the Bridge Connector. Discard the Connector and retain the screws.
4. Engage the male spade terminals of the Timer in the female connectors on the facia. Secure the Timer with the screws previously removed.
5. Fit the new Facia Infill Panel over the Timer and clip into place.
6. Continue with the installation and commissioning of the appliance. Reinststate the electrical supply to the appliance. Set the clock as described in these instructions and according to the requirements of the user. Instruct the user in the operation and setting of the timer.

1.2 Setting the Digital Timer

1.2.1 General Note

To access the programme settings, press the menu button.
NOTE: Before programming for the first time or to clear existing programmes press the 'Res' button with a pencil point or similar.

Whilst setting the programmer any symbol or value which is flashing is the current option or value to be changed. Options and values are adjusted by pressing the + or - buttons and then confirmed by pressing OK. If a flashing value or option is already at the required setting just press OK and continue with the next choice.

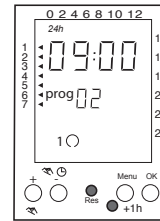
Symbols

●	= ON Symbol	⌚	= Manual Mode
○	= OFF Symbol	⌚	= Timed Mode

1.2.2 Setting the Time and Day

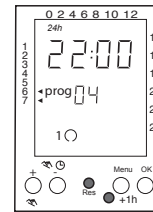
When the menu button is pressed the symbol '24h' will appear. Use the + or - button to change the display format from 24 hour to AM/PM if required. Press OK. Select the hour with the + or - button and then press OK. Select the minute with the + or - button and then press OK. Select the day with the + or - button and then press OK. (The day is indicated by the numbers vertically at the left hand side of the display 1 = Monday, 2 = Tuesday etc. Pressing + or - moves the arrow in the display to the required day).

1.2 Setting the Digital Timer - continued.



Example B shows the OFF time that corresponds with the ON time in Example A.

Example B



Example C shows an OFF time that is only set for days 6 & 7 (Saturday and Sunday).

Example C

ON times will always be denoted by an odd 'prog' number i.e. 'prog 01', 'prog 03', 'prog 05' etc. and the OFF times by even 'prog' numbers i.e. 'prog 02', 'prog 04' etc.

1.2.3 Setting the ON & OFF times

After setting the time/day and pressing OK 'P 01' will be displayed. This is the first of three pre-set programmes available.

P 01: Monday to Sunday, ON at 06:00, OFF at 22:00.

P 02: Monday to Sunday, ON at 07:00, OFF at 12:00, ON at 14:00, OFF at 20:00.

P 03: Monday to Sunday ON at 07:00, OFF at 12:00, ON at 14:00, OFF at 18:00, ON at 20:00, OFF at 22:00.

P 01, P 02 or P 03 can be selected by pressing the + or - buttons then pressing OK. The first ON time of the programme will be displayed. Press Menu to continue and return to normal operating mode.

After P 03 it is possible to set your own programme. Using the + or - buttons press until 'P --' is displayed. Press OK and 'prog 01' is displayed. By pressing OK again it allows the first ON time to be set. Using the + or - buttons adjust the hour, then press OK. Repeat to set the minute.

The arrows at the left of the display will all show. Press the + or - buttons to select one of the following options:-

1-7 (Mon. - Sun.), 1-6 (Mon. - Sat.), 1-5 (Mon. - Fri.), 6 & 7 (Sat. & Sun.) or any individual day until the required days are displayed.

Once the required day or group of days has been selected press OK.

This programmed ON time is now stored in the memory. The next option is 'prog 02', which is an OFF time. This is set the same way as the ON time, the day or days selection being carried forwards. When OK is pressed the OFF time is stored in the memory and 'prog 03' displayed. This is the next ON time. Continue programming until all selections are complete. Press MENU to return to the normal operating mode. See back page for examples.

Note: Programmed ON and OFF times are set as pairs. You cannot set different days for the OFF time when compared to the ON time (i.e. if the first ON time for Monday - Friday is 07:00, the corresponding OFF time must also be set for Monday - Friday)

1.2.4 Manual Override

To override the programme for the current period (ON or OFF), press the + button.

The programme will continue as normal following the next ON or OFF time setting.

1.2.5 To Change the Clock from Summer to Winter (BST)

Using a pencil point or similar press the +1h button to add one hour to the display during summer, and to deduct one hour for winter operation

1.2.6 Power Backup & Additional Display Features

In instances of mains power interruption the timer integral battery ensures that the time of day will continue to be displayed and the switching programme operates. Some parts of the display will not be visible until mains power is restored to the unit. The display also has further graphics which show the approximate times of ON operation, in the form of arrows against the numbers along the top and right hand side. Also shown is a switch output indicator at the bottom right. The arrow will be above either the clock symbol (indicating timed output) or the hand symbol (indicating manual override).

1.2.7 To Review or Alter Existing Selections

Press MENU and then press OK four times. The first programme ON time is displayed ('prog 01'). To check other programme ON and OFF times use the + and - buttons to view them. To alter any programme ON or OFF time press OK and the value to be changed will flash. This can be changed with + or - by the same process as described above in 'Setting the ON & OFF times'.

1.2.8 To Cancel a Time Period

Follow the procedure 'To Review or Alter Existing Selections'. With the ON time to be cancelled displayed change the hour value to two dashes (--). These will appear once the hour has been set beyond 23. The programme will be deleted as will the corresponding paired entry.

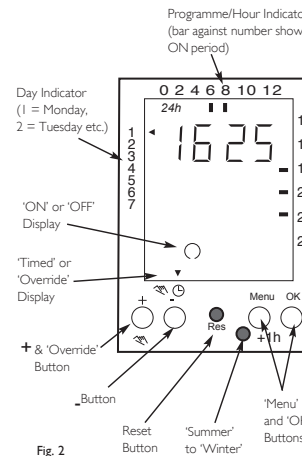
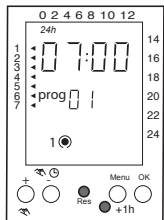


Fig. 2



Example A shows how the display will appear when the heating is set to come ON at 07:00 every morning.

Example A

1.3 Setting the Electro-mechanical Timer

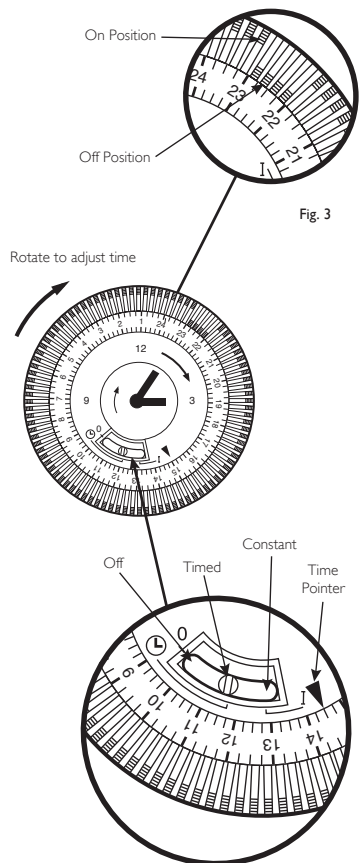


Fig. 3

Fig. 4

The Electro-Mechanical Timer allows the central heating system to be set ON or OFF every 15 minutes.

1.3.1 Three Position Switch

Using the three position switch the timer will allow either constant operation, timed operation or central heating off. Move the switch button by sliding to the desired position.

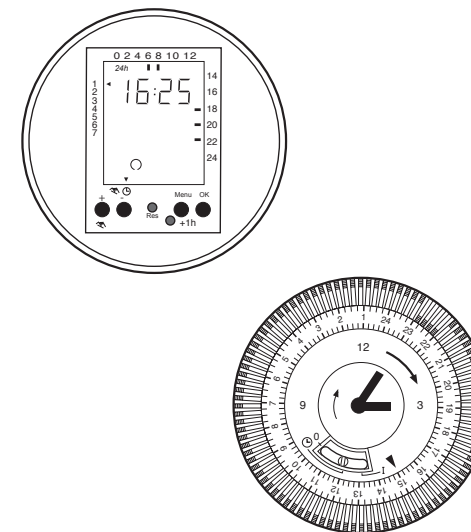
- I Constant: The heating will be on constantly irrespective of the position of the tappets. The heating will be controlled by the main thermostat on the appliance and/or any external controls.
- ⌚ Timed: The heating will operate according to the position of the tappets and be controlled as above.
- O Off: No central heating. Domestic hot water will operate on demand.

1.3.2 To Set the Time of Day

Turn the timer outer bezel clockwise, to align the pointer with the correct time to the nearest 15 minutes ensuring that A.M./P.M. is considered. **Do not at any time attempt to turn the bezel anti-clockwise.** To put the clock back for winter, turn through 23hr clockwise.

1.3.3 To Set the Timed Heating Programme

Decide which times of the day the central heating is required. The heating will operate when the white tappets are set to the outer edge of the bezel. To ensure the heating stays OFF set the required tappets inwards towards the centre of the bezel. Each tappet represents 15 minutes. For example: If the heating is not required between 10 A.M. and 11 A.M. the four tappets anticlockwise from the 10 A.M. will be set inwards (Fig. 4).



7658276 Mechanical 24hr Timer

7658523 Digital 7 day Timer

Instruction manual for installers and users

Plug-in Single Channel Mechanical & Digital Timer

Baxi Customer Support



0344 871 1545



Baxi
Brooks House,
Coventry Road,
Warwick, CV34 4LL



baxi.co.uk